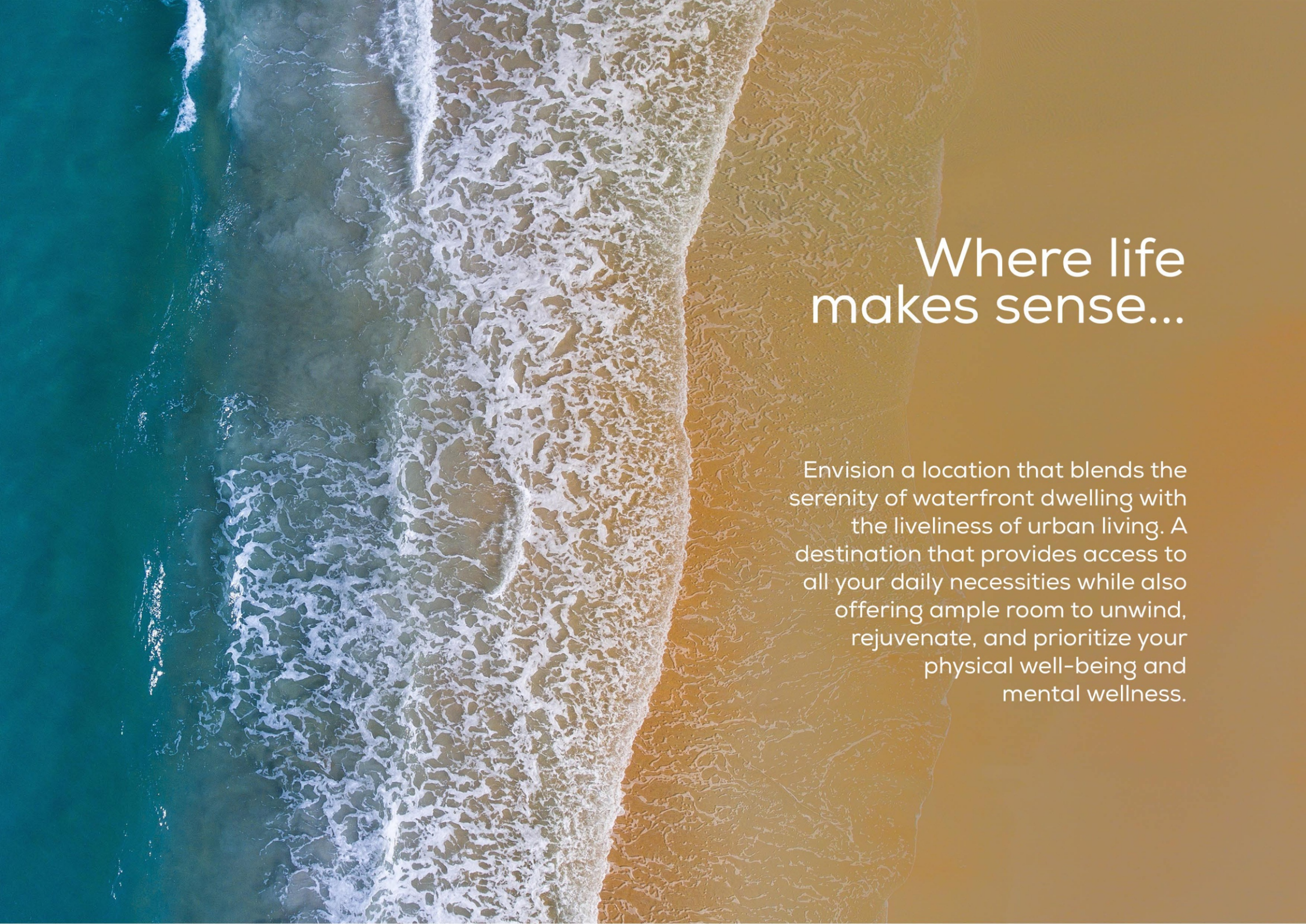




LEKKI ATLANTIC, LEKKI PENINSULA, LAGOS, NIGERIA





# Where life makes sense...

Envision a location that blends the serenity of waterfront dwelling with the liveliness of urban living. A destination that provides access to all your daily necessities while also offering ample room to unwind, rejuvenate, and prioritize your physical well-being and mental wellness.







# *Welcome to your own* PERSONAL PARADISE

Set within a scenic location and an expansive view of the Atlantic Ocean, where the blue sky is an extension of the open sea; Nautica Rise offers an opportunity to own a piece of paradise.

Offering a sophisticated and peaceful way of living with its luxurious apartments, each boasting a serene 180-degree view of the ocean, setting the standard for a refined lifestyle.



1, 2, 3 Bed Apartment &  
4 Bedroom Penthouse



Uninterrupted  
views of the sea



Observatory Deck



Access to multiple  
nearby parks and beaches



Rooftop Lifestyle &  
Edge Swimming Pool



Lush Green  
Environment





The waterfront is your  
front yard...



Thoughtfully designed apartments that balance location, luxury and functionality so that you don't have to compromise meaningful downtime.

Trade-in your work shoes for one of life's simplest, most exclusive pleasures – a barefoot stroll on the beach with loved ones.



20-Storey  
Luxury Masterpiece



Multi-Level Car Park



Retail Front at  
Ground Level







A PLACE TO  
SHARE LIFE'S  
BEST MOMENTS





# World Class

Indulge in contemporary  
waterfront living with endless  
breathtaking sunrises and  
sunsets on the Atlantic Ocean.





*Closer*  
than you think

Nautica Rise holds a prime position within the sprawling waterfront community of **Lekki Peninsula Scheme 1, Lagos.**



**5 MINS**

DRIVE TO THE NEAREST LEISURE / ENTERTAINMENT CENTRE



**10 MINS**

DRIVE TO NEAREST SCHOOL AND CITY CENTRE



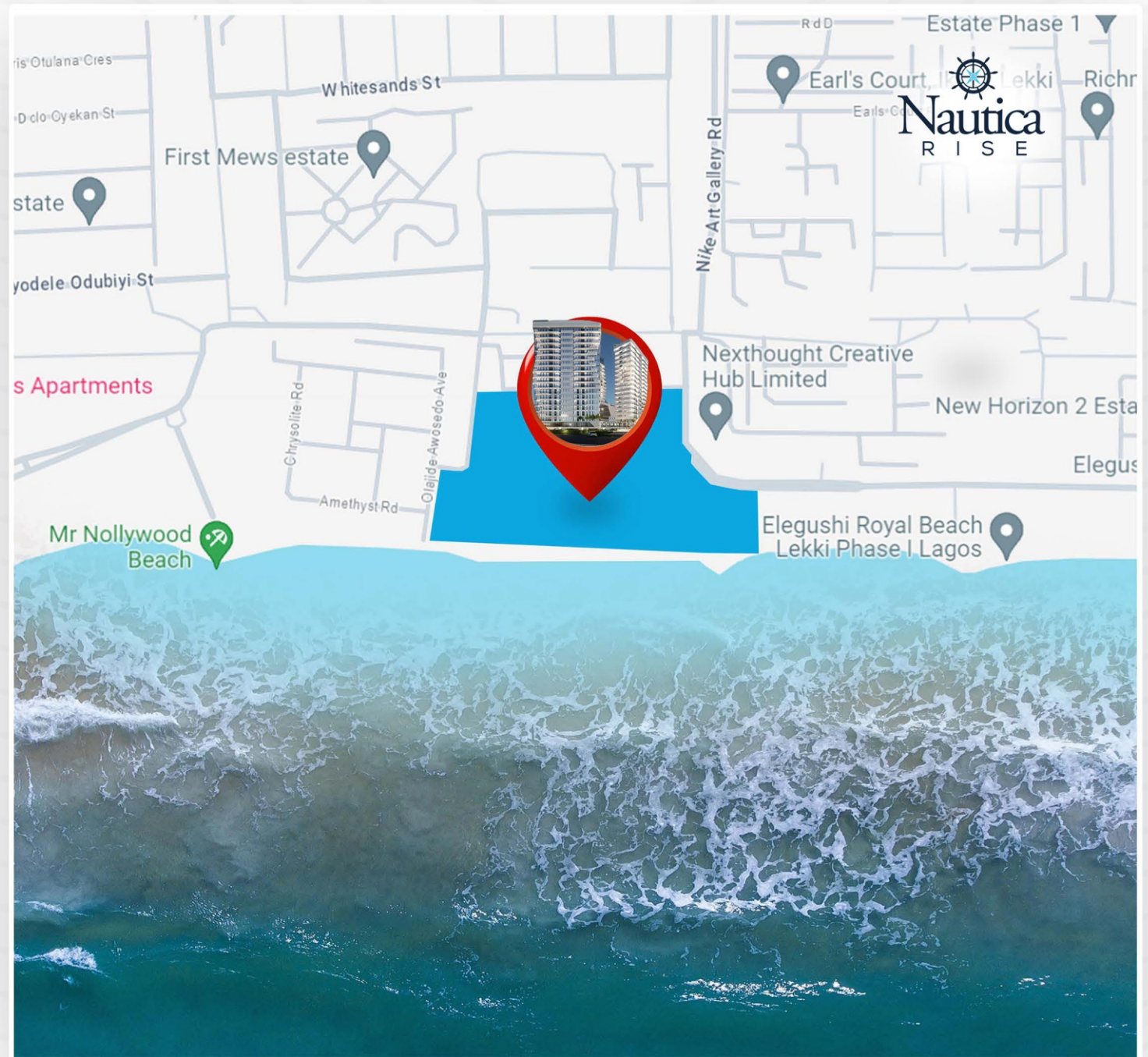
**7 MINS**

DRIVE TO LEKKI-EPE EXPRESS WAY



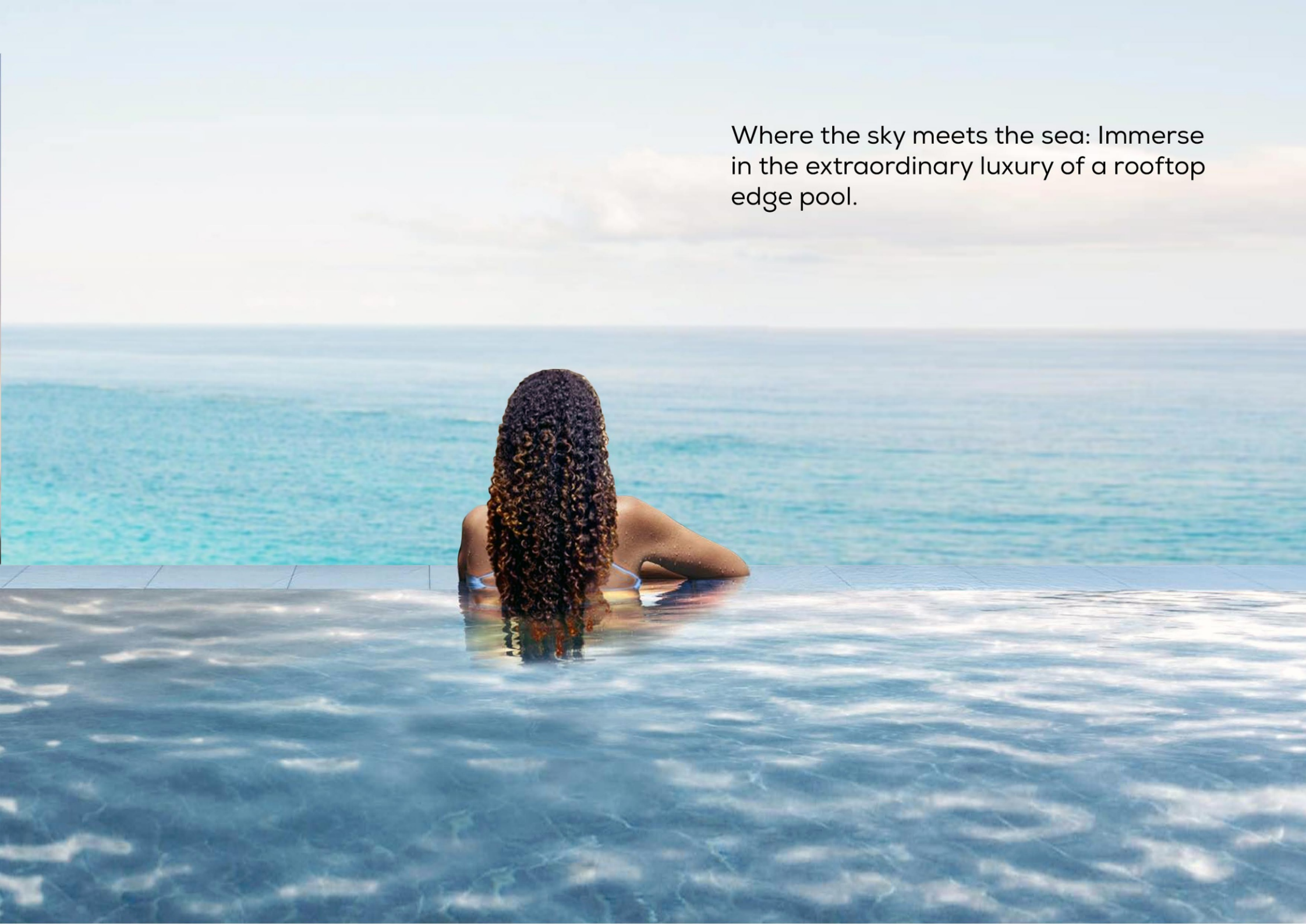
**46 MINS**

DRIVE TO INTERNATIONAL AIRPORT





Where the sky meets the sea: Immerse  
in the extraordinary luxury of a rooftop  
edge pool.











A powerful *design language*





Awaken your sense of serenity.  
Embrace astonishing views of the ocean.



# A World of *Possibilities*

Nautica Rise presents a holistic ecosystem of lifestyle, well-being, and leisure. Featuring a wellness club, an executive lounge, and a multitude of indoor and outdoor offerings, Nautica Rise stands as a comprehensive residential destination with an unmistakably refined ambiance.

Residents are set to enjoy exquisite experiences that awaken the senses and invigorate the body and mind.









## FACILITIES & AMENITIES

- Start-of-the-art Observatory Deck
- 5 Star Concierge Service with Valet Parking
- Rooftop Bespoke Gym with sea view
- Rooftop Club House with views of the sea
- Resident's Lounge
- Business Cafe
- Restaurant, Bar and Dining
- Outdoor Lounge Area
- Spa & Sauna/Steam Room
- Rooftop Edge Swimming Pool with fabulous sea-views
- Kids Swimming Pool
- Cabana
- Private Resident's Cinema
- Smart Home Enabled
- Multi-Level Car Park
- Retail Spaces
- Multi-Purpose Event Center
- 3-Tier Security
- Kids Play Room
- High-Speed Elevators
- High Broadband Speed Internet
- Lush Landscape
- 24Hr Power Supply
- Fully Fitted Kitchen
- Floor-to-Ceiling Windows





Elevate Your Fitness.  
Reach New Heights at our Rooftop Gym!





Indoor Cinema





Taking Lifestyle to  
*New Heights*

Exclusive to residents of Nautica Rise, each tower boasts an Observatory Deck located on its rooftop.



A blue-tinted architectural floor plan of a building with multiple rooms and corridors. A pen and a ruler are placed over the plan. The text "FLOOR PLANS" is centered in the image.

# FLOOR PLANS



## 1 BEDROOM APT. - TYPE A (RESIDENTIAL TOWER 1 & 2)

TOTAL AREA: 55sqm

FLOOR: 02 to 07 & 14 to 16



LIVING AREA  
1 BEDROOM  
DINING AREA

KITCHEN  
BALCONY

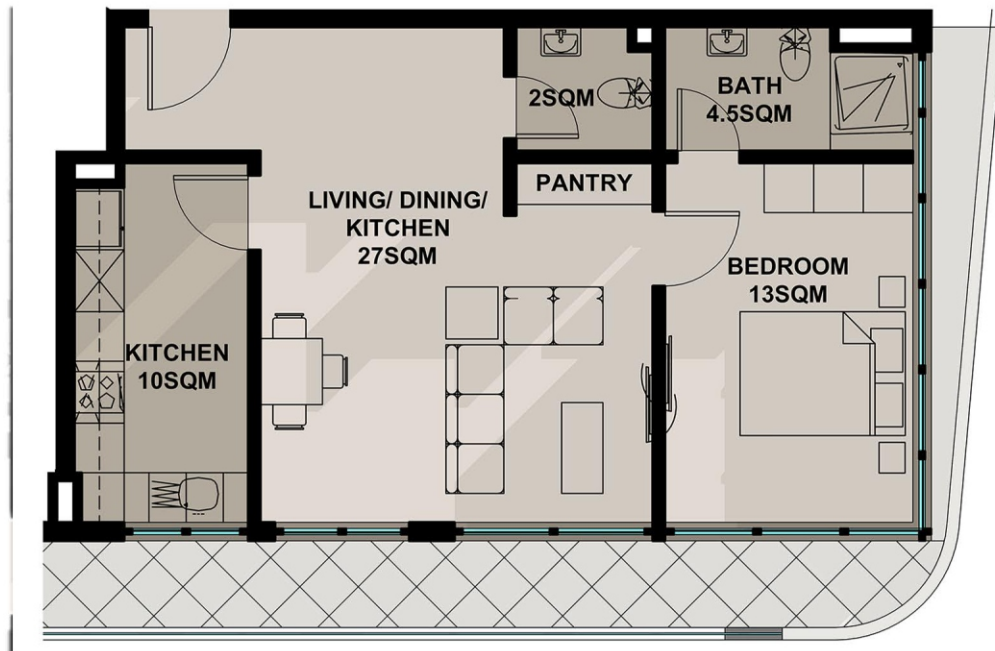




## 1 BEDROOM APT. - TYPE B (RESIDENTIAL TOWER 1 & 2)

TOTAL AREA: 75sqm

FLOOR: 02 to 07 & 17 to 18



LIVING AREA  
1 BEDROOM  
DINING AREA

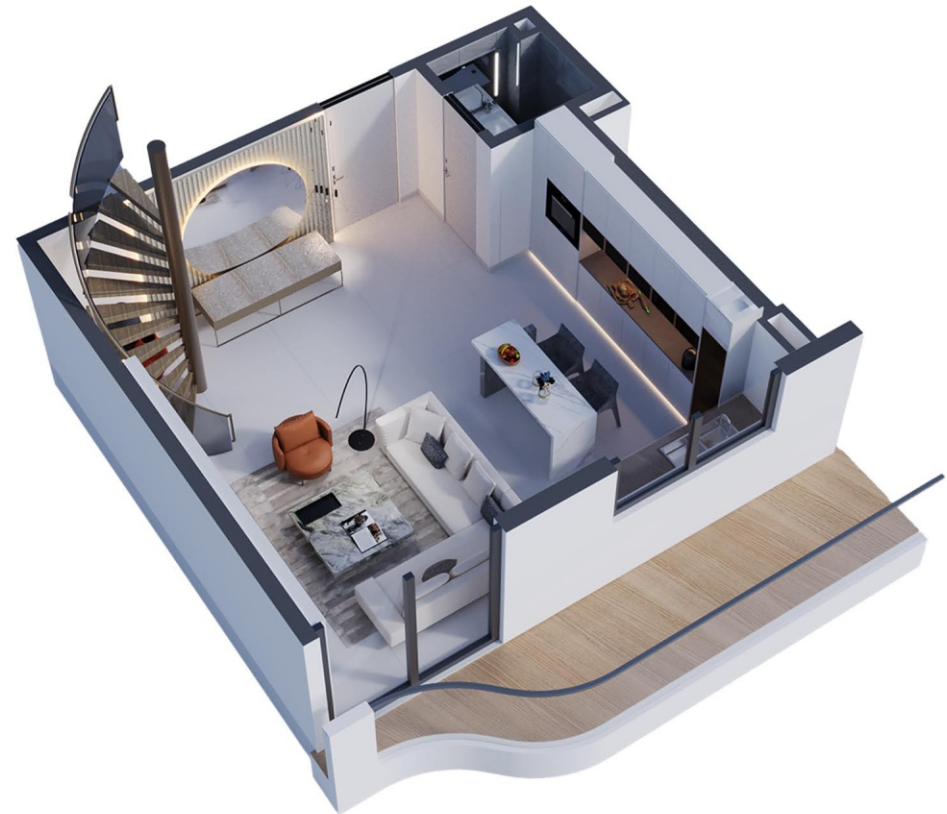
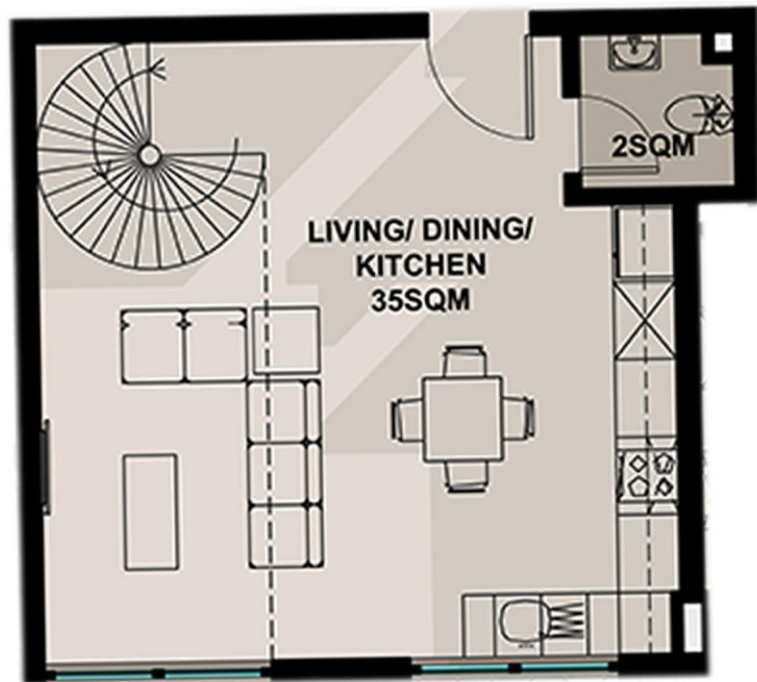
KITCHEN  
BALCONY



## 1 BEDROOM LOFT (RESIDENTIAL TOWER 1 & 2) - LOWER LEVEL

TOTAL AREA: 80sqm

FLOOR: 02 to 07



LIVING AREA

DINING AREA

KITCHEN

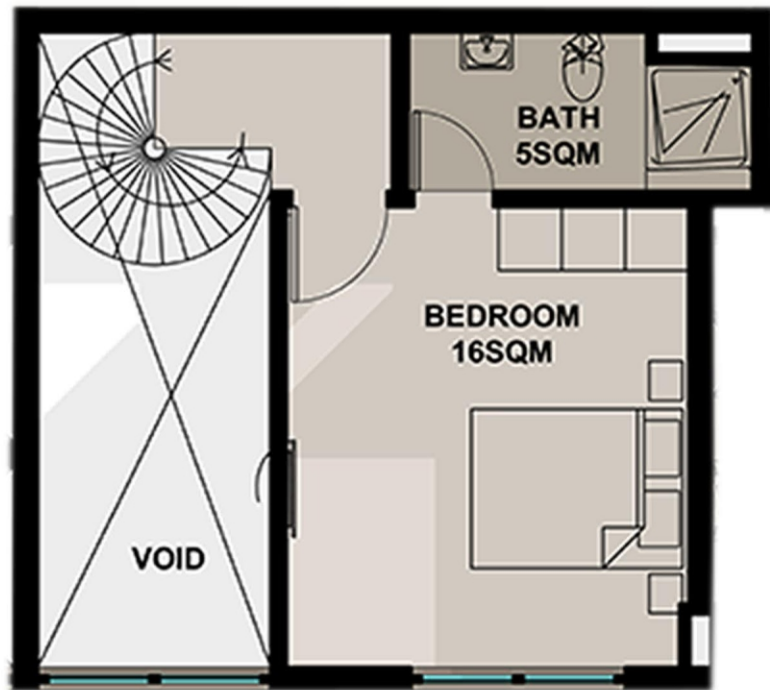
BALCONY



## 1 BEDROOM LOFT (RESIDENTIAL TOWER 1 & 2) - UPPER LEVEL

TOTAL AREA: 80sqm

FLOOR: 02 to 07



1 BEDROOM  
BATHROOM

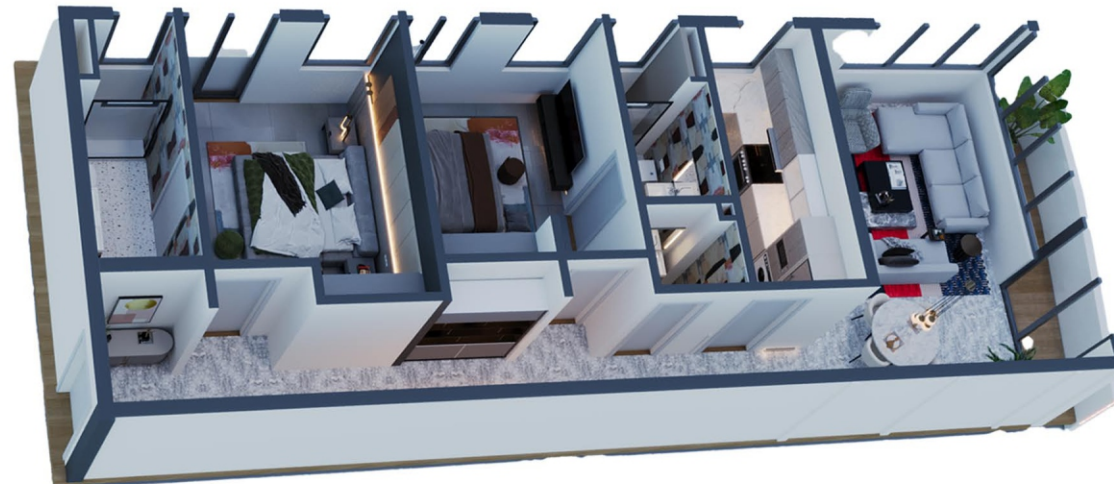
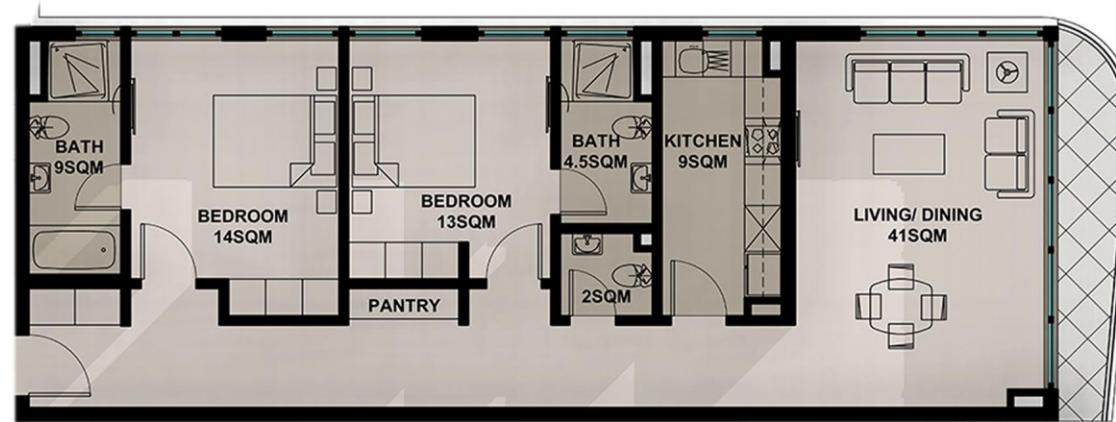




## 2 BEDROOM APT. + BQ (RESIDENTIAL TOWER 1 & 2)

TOTAL AREA: 120sqm (Type A), 130sqm (Type B)

FLOOR: 08 to 13



LIVING AREA

DINING AREA

KITCHEN

2 BEDROOMS

BALCONY

1 BQ



## 3 BEDROOM APT. (RESIDENTIAL TOWER 1 & 2)

TOTAL AREA: 195sqm

FLOOR: 14 to 16



LIVING AREA

DINING AREA

KITCHEN

STORAGE ROOM

3 BEDROOM

BALCONY

1 BQ



## 4 BEDROOM PENT. + 2BQ (RESIDENTIAL TOWER 1 & 2) - LOWER LEVEL

TOTAL AREA: 330sqm

FLOOR: 17 to 18



LIVING AREA

DINING AREA

KITCHEN

2 BEDROOMS

STORAGE ROOM

BOX ROOM

BALCONY

2 BQ



## 4 BEDROOM PENT. + 2BQ (RESIDENTIAL TOWER 1 & 2) - UPPER LEVEL

TOTAL AREA: 330sqm

FLOOR: 17 to 18



FAMILY LOUNGE

2 BEDROOMS

BALCONY



## 5 BEDROOM PENT. + 2BQ (RESIDENTIAL TOWER 1 & 2) - LOWER LEVEL

TOTAL AREA: 475sqm

FLOOR: 17 to 18



LIVING AREA

2 BEDROOMS

KITCHEN

DINING AREA

STORAGE ROOM

BALCONY

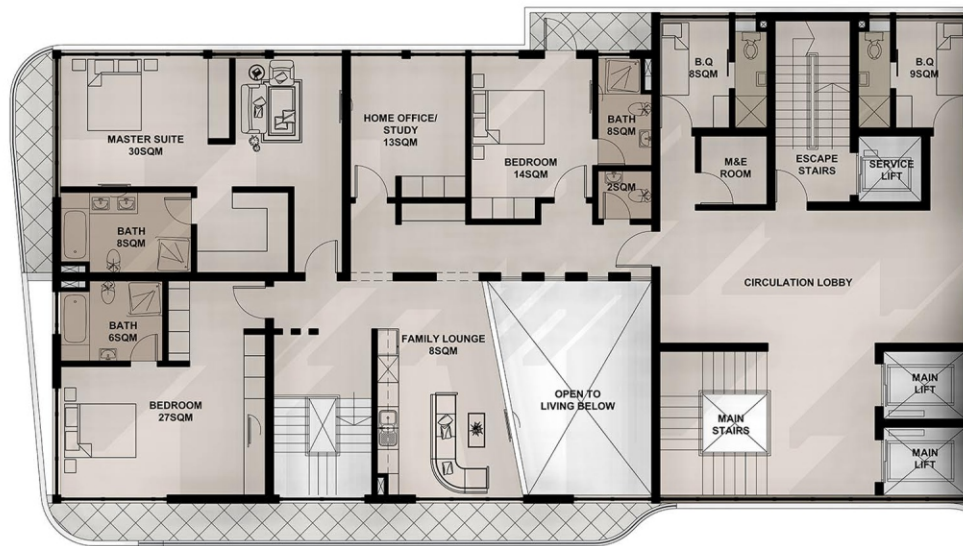
2 BQ's



## 5 BEDROOM PENT. + 2BQ (RESIDENTIAL TOWER 1 & 2) - UPPER LEVEL

TOTAL AREA: 475sqm

FLOOR: 17 to 18



FAMILY LOUNGE

3 BEDROOMS

KITCHEN

DINING AREA

HOME STUDY / OFFICE

STORAGE ROOM

BALCONY



Live  
*holiday moments,* at home





FAQs



# FREQUENTLY ASKED QUESTIONS

## 1. Where is Nautica Rise located?

Nautica Rise is located at Plot 16, Lekki Peninsula Tourism Scheme 1, Eti-Osa Area, Lagos.

## 2. What title document does Nautica Rise have?

Certificate of Occupancy.

## 3. What is the price per unit?

Request for the product price sheet.

## 4. What are the various unit types?

Nautica Rise comprises of 1 bedroom apartment & loft, 2 and 3 bedroom apartment + BQ and 4 & 5 bedroom Maisonette Penthouse + 2BQs each.

## 5. What level of finishing will be provided for each unit?

Nautica Rise comes with premium finishing and state-of-the-art infrastructure.



# FREQUENTLY ASKED QUESTIONS

## 6. What do I get after my initial deposit?

A starter pack comprising of receipts, sales invoices, and sales agreement.

## 7. What do I get after completion of payment?

Receipts, Letter of allocation, Registered deed of assignment & Restrictive estate covenant.

## 8. What other payments do I make apart from the payment for the apartment?

Legal fee and service charge (when the building becomes operational).

## 9. Can I pay a deposit and the balance at any time within the duration of the transaction?

Payment options are outright or installment (monthly or quarterly).

## 10. When would the project be delivered?

The project will be delivered in Q4, 2028.



# DEVELOPMENT TEAM

## DEVELOPER



*Cruxstone Development and Investment Limited is a metropolitan Real Estate Development and Investment firm, established in 2017 with a track record of being Nigeria's fastest selling and fastest growing high-end real estate developer. We boast of over 100 years of combined management experience in the Real Estate Development and Investment sector and have completed several millions of dollar's worth of urban real estate transactions within Lagos, Nigeria.*

## ARCHITECT



## BUILDER



## PILING CONTRACTOR



## PROJECT MGT.



## STRUCTURAL ENGINEER



## MECHANICAL & ELECTRICAL ENGINEER



Consultants Collaborative Partnership



An aerial photograph of a large white speedboat with a blue stripe and a smaller jet ski, both moving across the ocean and leaving white wakes. The water is a deep blue with sunlight reflecting off its surface.

*Freedom to live  
above your dream...*





WWW.NAUTICARISE.COM

LEKKI ATLANTIC, LEKKI PENINSULA, LAGOS, NIGERIA

Disclaimer: The property details, contents and other information contained in the various collaterals such as brochure (s) / website / pamphlets / newspaper advertisements / hoardings / emails / mailers / presentation(s) and other mediums/forms etc. of the company Cruxstone Development & Investment Ltd. for its residential project namely; Nautica Rise by Cruxstone coming on Plot 16, Lekki Peninsula Tourism Scheme 1, Eti-Osa Area, Lagos State, Nigeria, have been prepared in good faith by Cruxstone Development & Investment Ltd., for its project, Nautica Rise by Cruxstone. The above collaterals are only intended for general marketing purposes and should not be relied upon by any person as being complete or accurate and are not intended to, and do not constitute, an offer, a contract or create any contractual relationship.

No description or information of any kind provided by Cruxstone Development & Investment Ltd., whether in written or oral, contained in any form of the above collaterals or elsewhere (information) may be relied upon as a statement of representation, warranty or fact. Neither Cruxstone Development & Investment Ltd. nor its agents make any representation or warranty the accuracy of completeness of the information and accordingly all information is given entirely without any liability on the part of Cruxstone Development & Investment Ltd. and its agent to any prospective client(s)/tenant(s) or their advisers, agent and representatives. All representations and warranties made in the various collaterals of the company of any form as mentioned above or elsewhere (information) are disclaimed. Cruxstone Development & Investment Ltd., its directors, employees, agents and other representative will not accept any liability suffered or incurred of the company as mentioned above, by any person arising out of or in connection with any reliance on the content of or information contained in various collaterals of the company of any form as mentioned above or elsewhere (information). Interested parties should conduct their own independent investigation / due diligence at their own cost to determine to their satisfaction the suitability of the property for their needs.

All site plans, drawings, specifications, dimensions, design(s), measurements, location, placements, visual representations like pictures, images, artistic renderings / impressions / depictions / illustrations / and other graphic representations and references are only indicative and are subject to changes as may be decided by the company or directed by any competent authority in the best interests of the development. The areas mentioned in the brochure are approximate only and may differ from the actual apartment area. Soft furnishing, furniture and gadgets do not form a part of the offering.